

# G-BOARD (OUTWEAR)

External Sheathing Board



- ✦ Rated as Euroclass A1 'Non-combustible'
- ✦ Safe for structures over 18m
- ✦ Water resistant
- ✦ 12 months exposure guarantee
- ✦ Through wall tested to 90 mins Fire Resistance to BS EN 1364-1

## Product & Company Overview

Klasse G-board is a high performance external sheathing board designed to transform the building envelope construction. Constructed from glass fibre mat and a gypsum based core.

Klasse G-board is designed to be installed on:

- Light steel infill and oversail systems on concrete and steel frame buildings
- Modular buildings
- Light gauge steel frame
- Timber frame buildings

### **IT'S EASY TO DO BUSINESS WITH US**

- Klasse understands your requirement for excellent service and product reliability. As a trusted supplier we provide fast quotes and rapid delivery from our UK warehouse
- Friendly and knowledgeable experts
- Large availability of stock
- Reactive, responsive customer service and key account management
- 12 year Warranty



# Quality Engineered

## ROBUST & DURABLE

- Your project requires robust external sheathing boards, Klasse G-board has a higher density to mitigate fire, wind and installation damage to ensure you deliver a safe and on time project
- Boasts impressive pull through strength and high impact resistance
- Extensively tested in a through wall system to achieve 90mins fire protection (BS EN 1364-1)
- Easy to cut and handle, minimising waste on site
- Water Resistant so building can be made watertight quickly to enable internal trades starting quicker
- 12 months exposure guarantee

## SAFE & EASY TO USE

- We understand how challenging cement boards can be. As an alternative, Klasse G-board offers a lighter gypsum board ensuring faster installation and a safer working environment
- Easy to handle, 30% lighter than traditional cement boards
- Can be cut with a knife no power tools required and minimal dust
- Can be curved
- Can eliminate the need for a breather membrane helping to lessen project costs



## Suitable for most facades

**BRICK CLADDING**



**STONE CLADDING**



**TIMBER RAINSCREEN**



**METAL**



**RAINSCREEN MATERIAL**



**RENDER**



## System Performance

Klasse G-board is constructed from a gypsum core combined with fibre glass equating to a high performance external sheathing which demonstrates high sound insulation, fire protection and airtightness. Versatile to be used in any framing system.



### BBA Certified

Providing you with complete peace of mind that our product has passed rigorous BBA testing.



### Acoustic Performance

Acoustically tested according to ISO 10140-2.



### Thermal Performance

Additional insulation can be installed without detrimental effect to the fire or acoustic performance.



### Weathering

Klasse G-board has completed extensive weathering tests to ensure the structure remains stable and that it can resist mould even when left exposed. Klasse G-board can be left exposed for 12 months.



### Fire Performance

Tested to EN1364-1 and can provide fire resistance for over 90 mins in both directions. Rated to Euroclass A1 ensures it is suitable for buildings over 18m tall.



# Through Wall System tested to EN 1364-1

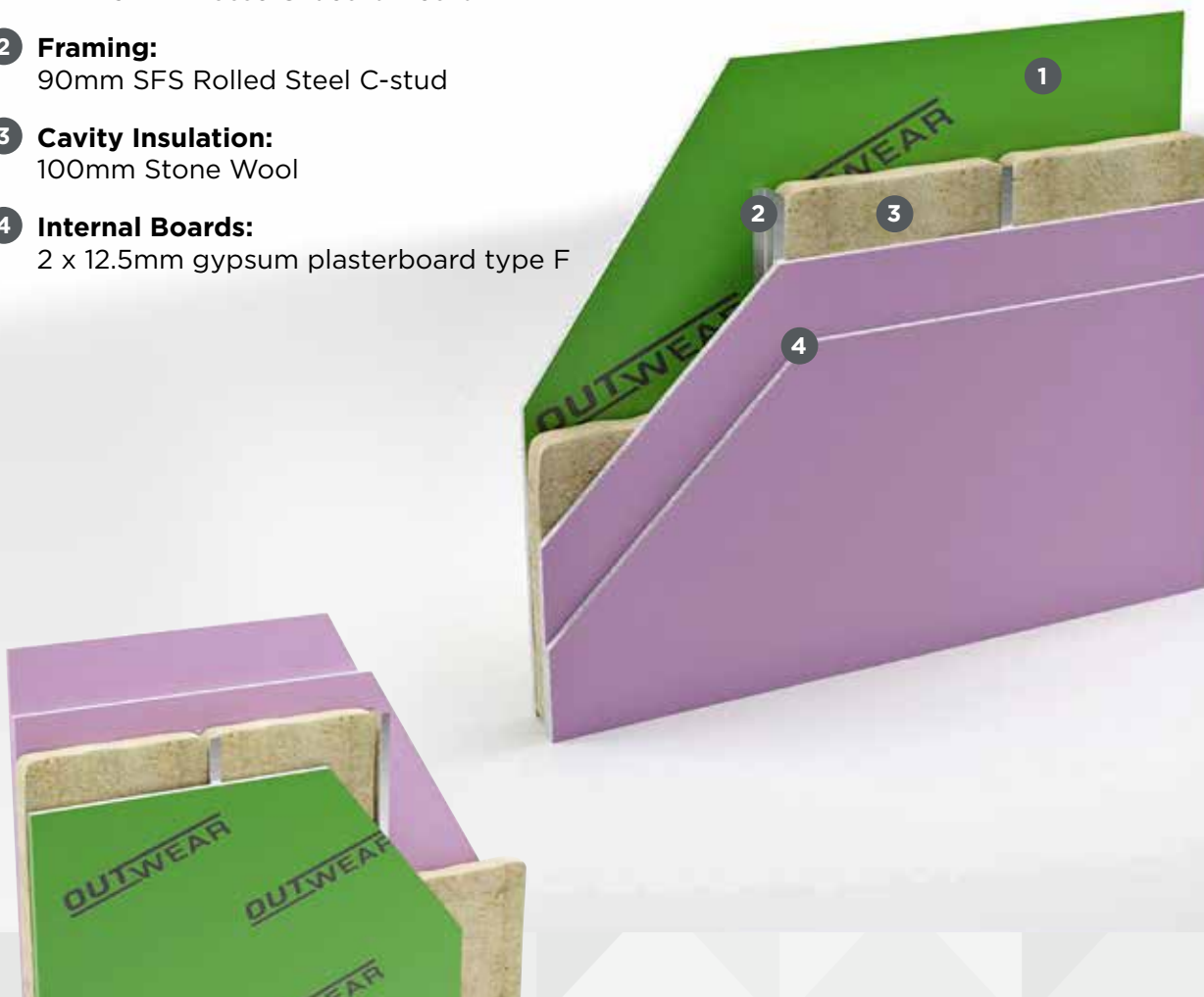
Klasse G-board External Sheathing Board + SFS + Double  
Layer 12.5mm Plasterboard Internally.



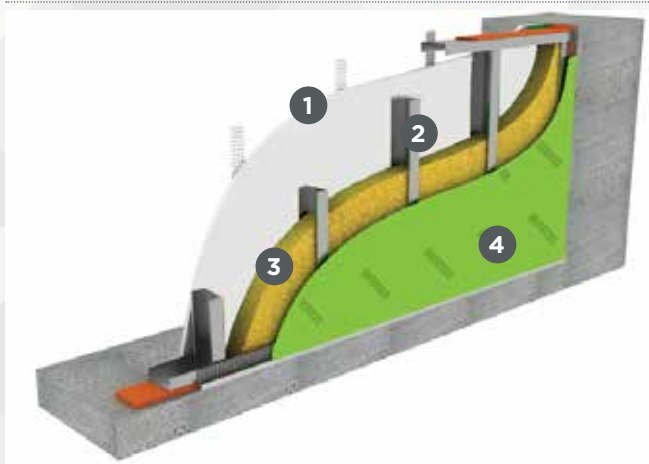
**Fire resistance:**  
to BS EN 1364-1:2015

90 mins (inside to out)  
90 mins (outside to in)

- 1 External Sheathing Board:**  
1 x 12.5mm Klasse G-board Board
- 2 Framing:**  
90mm SFS Rolled Steel C-stud
- 3 Cavity Insulation:**  
100mm Stone Wool
- 4 Internal Boards:**  
2 x 12.5mm gypsum plasterboard type F

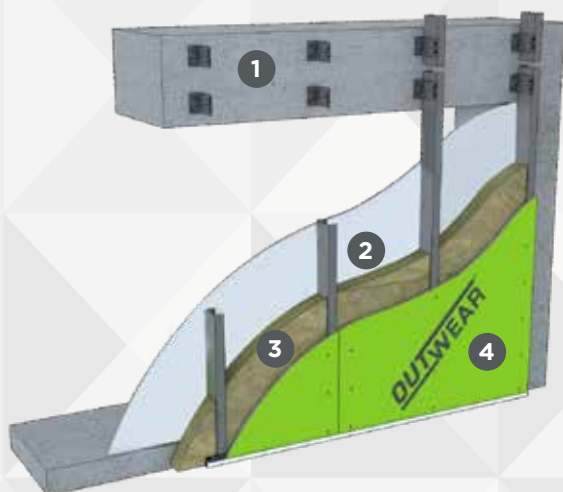


# Exterior Wall Lining Systems



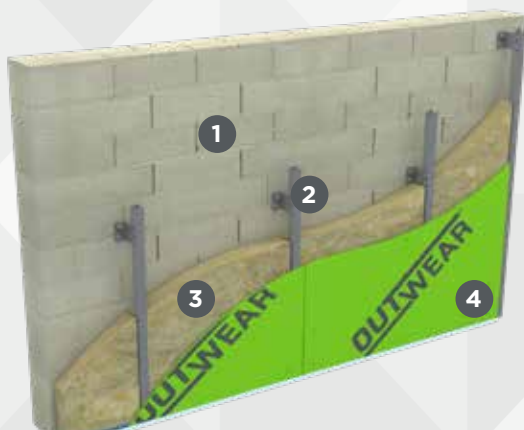
## SINGLE INFILL SYSTEM

- 1 Type F interior plasterboard
- 2 SFS profile
- 3 100mm stone wool insulation
- 4 12.5mm Klasse G-board



## EXTERIOR LINING OVER EXISTING FLOOR

- 1 SFS light steel frame
- 2 Type F interior plasterboard
- 3 100mm stone wool insulation
- 4 12.5mm Klasse G-board



## EXTERIOR WALL LINING OVER EXISTING WALL

- 1 Existing wall
- 2 SFS light steel frame
- 3 100mm stone wool insulation
- 4 12.5mm Klasse G-board

# Installation Guide

## 1 Fix board to steel frame

- Install boards vertically in a staggered brick pattern
- Locate screw at least 13mm and no more than 20mm from the board edges
- Fix to studs at 300mm maximum centres

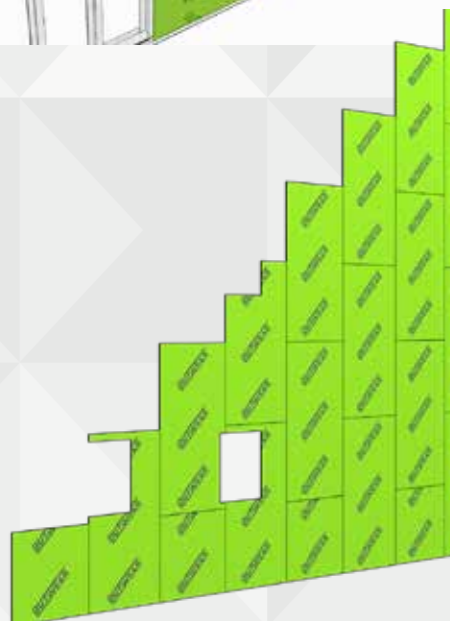
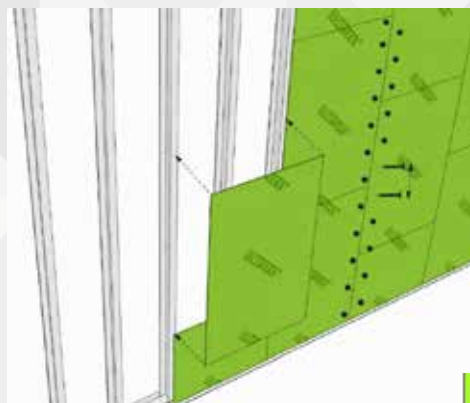
### Curved installations

- SFS stud centres up to maximum 400mm centres for a curved radius no tighter than 4m
- Fix Klasse G-board boards horizontally across studs and install in brick pattern
- Fix with self drilling screws at a max of 300mm
- Use FireFend™ silicone or joint tape



## 2 Sealing

- Use FireFend™ silicone sealants to provide a weather seal as this allows two boards to be butted
- Apply the sealant continually as the boarding progresses
- Apply sufficient sealant to create a joint of 2mm
- Gaps should be filled with additional sealant
- When water tightness is critical, we recommend testing with a hose
- Sealing methods should allow for all expected movement and continue to meet the fire, acoustic or weather resistance requirements
- Tape can be applied at anytime within the 12-month exposure period
- Do not use tape in conjunction with silicone sealant
- Keep the surface generally clean and dry to maximise adhesion
- Apply tape without wrinkles or stretch the tape. Using a roller may help adhesion





### 3 Board inspection

- Remove any facer delamination which is greater than 5mm
- Holes created by repeated attempts to screw must be filled
- Small areas up to 15mm<sup>2</sup> must be patched
- If the area of board damaged exceeds 300mm<sup>2</sup> it must be replaced



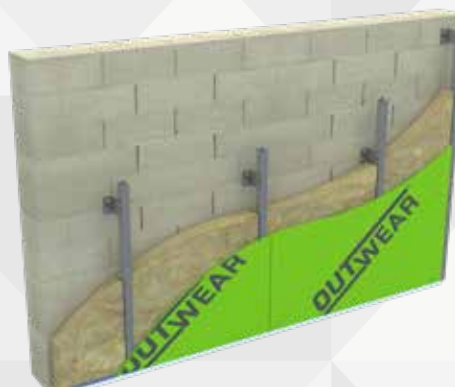
### 4 Insulation fixing

- Steel rails used with Klasse G-board can create cavities to support insulation and fixed
- Stone wool is recommended
- Insulation can be fixed using mechanical or adhesive methods
- Adhesive fixing restricts the amount of bowing of boards and can prevent small air gaps
- Always provide temporary retention by fixing through to studs



### 5 Mechanical insulation

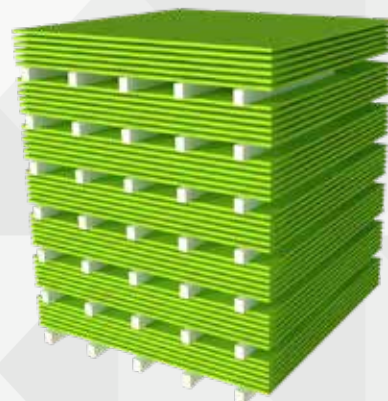
- Select the required number of insulation fixings depending on the size of the wind loading per sq.m
- Insulation retention washers must be appropriately sized



**KLASSE G-BOARD IS  
FASTER TO INSTALL  
THAN TRADITIONAL  
CEMENT PARTICLE  
BOARDS**

# Technical Information

Technical Information	
Length	2400mm
Width	1200mm
Thickness	12.5mm
Mass	$\leq 11.3\text{kg/m}^2$
Flexural strength - Longitudinal	$\geq 761\text{ N}$
Flexion Break - Transverse	$\geq 601\text{ N}$
Edge Type	Square Edge
Thermal conductivity - $\lambda$	0.25 W/mK
Fire reaction	BS EN 13501-1 Euroclass A1
Water vapour resistance ( $S_d$ in m)	0.222
Water vapour resistance factor ( $\mu$ )	17.4
Total water absorption (%)	$\leq 5$ Type GM-H1
Standard	BS EN 15283-1:2008



Fastening	
Construction	Carbon Steel
Drive Type	Pozi-drive head, double countersunk with ribs
Compliance	BS 5427
Diameter	4.2mm
Pull-through Value	0.626 kN
Life Expectancy	Exceeds 25 years in correct application



# Additional Information

## Waste and recycling

- The gypsum core in Klasse G-board is fully recyclable
- Gypsum powder from the recycled board fully meets the quality criteria of BSI PAS109 in relation to composition, paper fibre content and purity. This provides for diversion from landfill into recycling markets
- Klasse G-board comes with minimal packaging and the pallets are made of recyclable material

## Handling and storage

- When manually handling Klasse G-board, consideration of the correct manual handling technique has to be made to limit risk, according to the Manual Handling Operations Regulations 1992
- Klasse G-board is supplied on pallets. Packs should be moved using a fork lift truck or hydraulic trolley
- Klasse G-board should be stored in dry, flat conditions
- Klasse G-board is weather resistant when installed in the vertical plane
- Klasse G-board is not a suitable product to be used as a platform or deck, it will not support body weight and therefore it is important that installers use an independent support mechanism

## Pack sizes

- Board thickness: 12.5mm
- Width: 1200mm
- Length: 2400mm
- Boards per pallet: 52
- Board weight: 12kg/m<sup>2</sup>

## Personal protection

- Respiratory: Localised ventilation or extraction is recommended when creating dust and fibres. Alternatively use appropriate respiratory protection
- Eyes: Eye protection is recommended when dust and/or fibres are likely to be generated as irritation may be caused by contact
- Hands: Gloves should be worn when handling this product







**TEKTUM**  
SUPPLIES

**Tektum Supplies Ltd,**  
56 Clydesmill Place, Glasgow, G32 8RF

**0141 739 9440**

**tektumsupplies.co.uk**

**sales@tektumsupplies.co.uk**